



JX3V-90xxNL



## PIN-IN-PASTE - TOP-ENTRY PULSEJACK™

### CONNECTORS WITH INNOVATION AND EXCELLENCE

Pulse Wired Communications JX3V- PulseJack® top entry ICM platform brings together the know-how of SMD, with the features of THD to support the newest production trends for THR/Pin-in-Paste.

The JX3V represents the latest revision of the popular Top Entry product range and has been designed to suit the growing demand for reflow compatible THT products for the various technologies being used:

Be it Pin-in-Paste (PiP), Solder in the Hole (SiH), Intrusive in-Hole Reflow, Through Hole Reflow (THR) or just using these products to save on placement time for a 2 stage Soldering process (IR followed by WAVE).

**This new range will be more than a match.**

The JX3V-90xxNL series has a 0.9mm stand-off, allowing for the solder and flux mask to be deposited/ screen printed directly on to the component side of the PCB in the area directly underneath the PulseJack™.

The parts are 100% electrically compatible with the existing range so can be used without requalification and we've added the 1Gigabit option for current driven/ AFE Phys alongside the voltage driven/DSP as we're still seeing a need in the market to support the older styles. – our performance exceeds IEEE802.3ab for use with Commercial and Industrial Fast Ethernet (100mbps) and 1 Gigabit (1000mbps) Phys as well as Industrial ethernet protocols including the latest TSN chipsets.

Made from high grade, high temperature plastic with ruggedized high glass transition LEDs these PulseJacks® will survive 3x 245°C reflow and are fully RoHS6and WEEE compliant.

## FEATURES AND BENEFITS:

- Motor/Servo Control boards
- Embedded Industrial Ethernet Controllers
- Instrumentation and Measurement links
- Industrial Access Points & Sensors
- Security and Imaging Systems

## KEY APPLICATIONS

- TOP-ENTRY with and without LEDs
- 100% footprint and performance match to our existing JXD2- product range.
- Covered by UL File E216117
- Operating temperature -40°C up to +85°C
- Supports WAVE and IR Reflow Soldering with 260°C Peak Profiles
- LED options provide easy visual check for connectivity or data rate.
- Performance exceeds IEEE802.3u/ab over a wide temperature range
- Available in Tape and Reel or in Trays for high-speed Pick-n-Place

## PIN-IN-PASTE - TOP-ENTRY PULSEJACK™

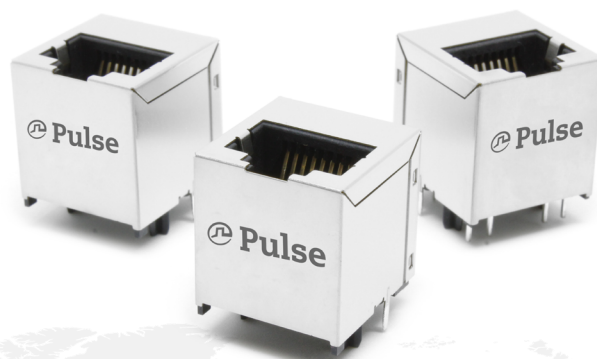
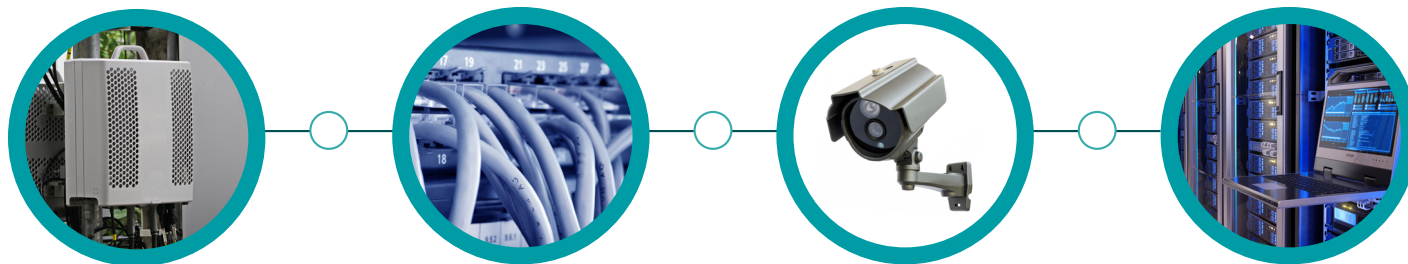
CONNECTORS WITH INNOVATION  
AND EXCELLENCE

JX3V-90xxNL - Part Number Replacement Guide

New Designated Part Number*	Replaces existing Part Number	Data Rate	LED	Comment
JX3V-9001NL	JXD2-9001NL	100Base-TX	N/A	Fast Ethernet AutoMDIX
JX3V-9010NL	NEW	100Base-TX	Green/Yellow	Fast Ethernet AutoMDIX
JX3V-9015NL	JXD2-9015NL	1000Base-T	Yellow/Green	DSP/V(dr) Phy
JX3V-9025NL	NEW	1000Base-T	Yellow/Green	AFE/I(dr) Phy

\*Shipping details: Standard Part Number = 55 pcs in a 315 x264 x20 Tray

Part Number with "T" suffix = 70 pcs in a 330 (13") Tape and Reel



Visit [www.pulseelectronics.com](http://www.pulseelectronics.com) to search for the JX3V product family data sheet or contact the "Network" team or a local Sales rep or FAE support desk to receive a full technical datasheet on a specific part.  
The Resource Library has a really useful Ethernet layout consideration paper with tips for PCB layout.

• Pulsejack™ is a registered Trademark of Pulse Electronics inc. - a YAGEO Company •