






# SPLIT CORE Current Sense Transformers



-  **+/- 1% Accuracy @ 25° C**
-  **Operating Temperature: -40 to +85° C**
-  **Insulation Class: 600VAC**
-  **Leads: 22AWG Twisted, 32" length minimum**
-  **Frequency: 50/60Hz**

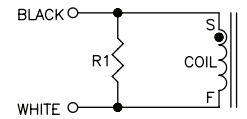
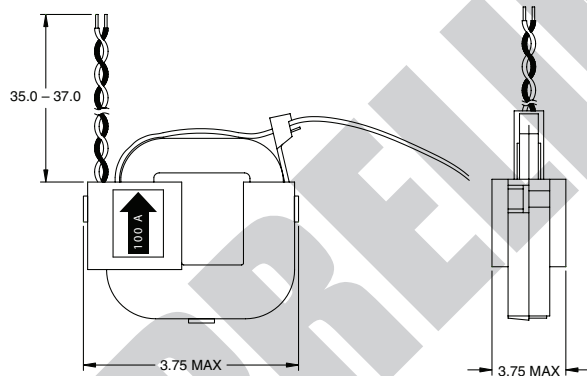
## Electrical Specifications @ 25°C — Operating Temperature -40 to +85° C

Part Number	Output Voltage	Input Current Range	Burden Resistor (Ohms)	Ratio
PL7100.10	0 - 1.0 VAC	0 - 100A	24.9	2500
PL7100.25	0 - 2.5 VAC	0 - 100A	62.0	2500
PL7100.50	0 - 5.0 VAC	0 - 100A	124.0	2500
PL7200.10	0 - 1.0 VAC	0 - 200A	12.4	2500
PL7200.25	0 - 2.5 VAC	0 - 200A	30.9	2500
PL7200.50	0 - 5.0 VAC	0 - 200A	62.0	2500
PL7400.10	0 - 1.0 VAC	0 - 400A	6.2	2500
PL7400.25	0 - 2.5 VAC	0 - 400A	15.4	2500
PL7400.50	0 - 5.0 VAC	0 - 400A	30.9	2500

### Mechanical

### Schematic

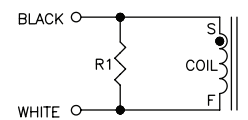
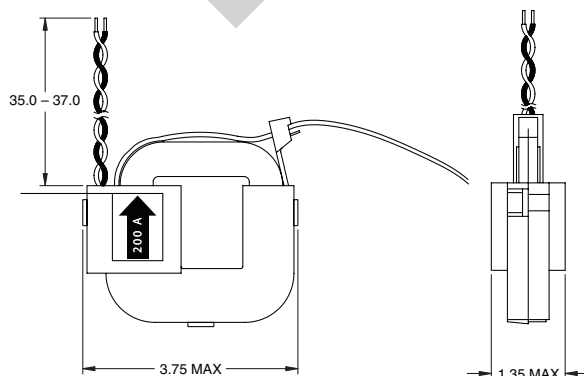
#### PL7100.XX



### Mechanical

### Schematic

#### PL7200.XX



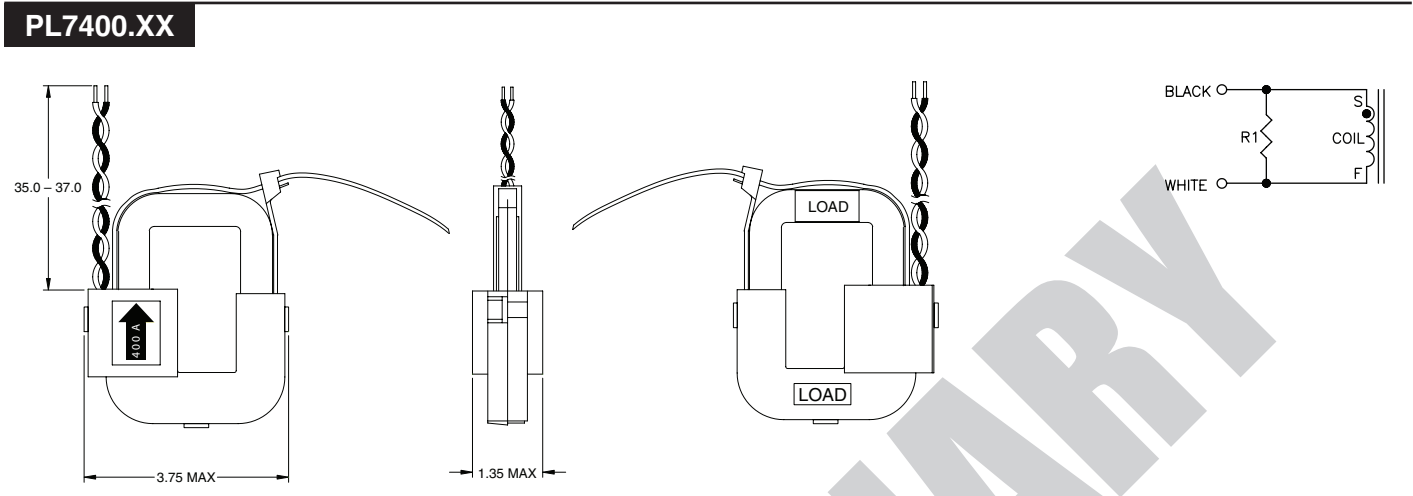
# SPLIT CORE

## Current Sense Transformers



### Mechanical

### Schematic



### Linearity Data

PL7400.25 400 AMP			PL7100.25 100 AMP			PL7200.25 200 AMP		
VOUT	AMP	SHUNT	VOUT	AMP	SHUNT	VOUT	AMP	SHUNT
0.000	0.00	0.000	0.000	0.00	0.000	0.000	0.00	0.000
0.123	26.57	5.314	0.189	9.90	4.948	0.189	19.78	4.945
0.234	49.67	9.934	0.417	21.45	10.725	0.410	42.92	10.731
0.359	75.15	15.030	0.582	29.86	14.930	0.581	59.75	14.937
0.475	99.06	19.811	0.781	40.01	20.003	0.781	80.05	20.013
0.607	126.47	25.293	0.980	50.00	25.001	0.978	100.00	25.000
0.717	149.36	29.872	1.179	60.00	29.999	1.175	120.00	29.999
0.840	174.50	34.900	1.378	70.00	35.000	1.372	140.00	35.000
0.961	199.40	39.880	1.581	80.16	40.080	1.569	160.16	40.040
1.082	224.55	44.910	1.778	89.96	44.980	1.760	179.96	44.990
1.203	249.90	49.980	1.972	99.92	49.958	1.950	199.85	49.962
1.335	275.40	55.080						
1.450	300.65	60.130						
1.578	325.00	65.000						
1.691	350.61	70.122						
1.818	375.69	75.138						
1.940	402.69	80.538						

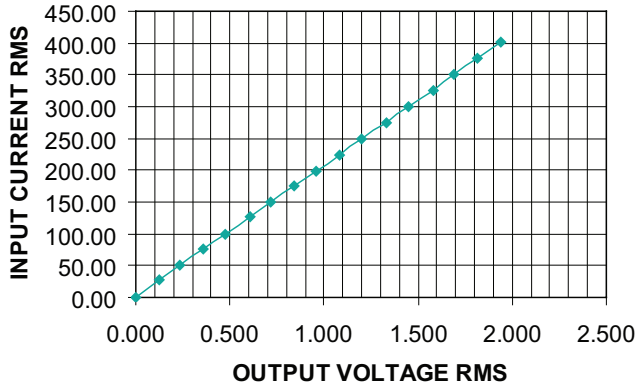
# SPLIT CORE

## Current Sense Transformers

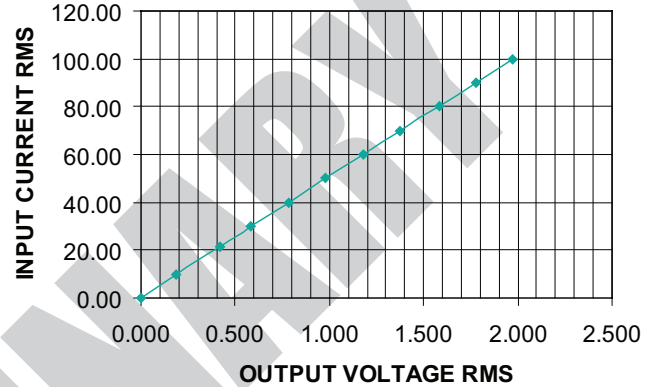


### Chart Data

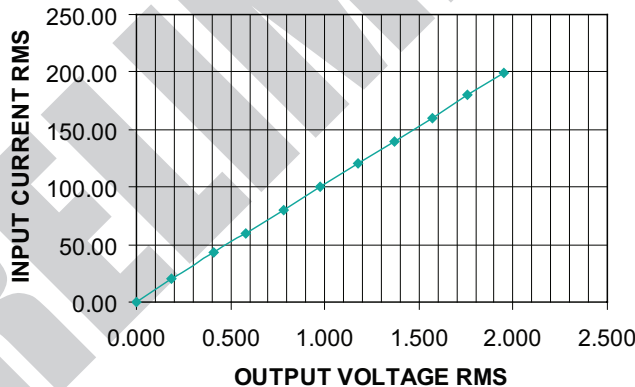
**PL7400.25**  
0 TO 400 AMPS, 60HZ- LINEARITY



**PL7100.25**  
0 TO 100 AMPS, 60HZ- LINEARITY



**PL7200.25**  
0 TO 200 AMPS, 60HZ- LINEARITY



### For More Information:

**Pulse Worldwide Headquarters**  
Two Pearl Buck Court  
Bristol, PA 19007  
U.S.A.

[www.pulseeng.com](http://www.pulseeng.com)  
Tel: 215 781 6400  
Fax: 215 781 6403

**Pulse Europe**  
Zeppelinstrasse 15  
D-71083 Herrenberg  
Germany

Tel: 49 7032 7806 0  
Fax: 49 7032 7806 135

**Pulse China Headquarters**  
B402, Shenzhen Academy of  
Aerospace Technology Bldg.  
10th Kejian Rd.  
High-Tech Zone  
Nanshan District  
Shenzen, PR China 518057

Tel: 86 755 33966678  
Fax: 86 755 33966700

**Pulse North China**  
Room 2704/2705  
Super Ocean Finance Ctr.  
2067 Yan An Rd. West  
Shanghai 200336  
China

Tel: 86 21 62787060  
Fax: 86 2162786973

**Pulse South Asia**  
135 Joo Seng Rd.  
#03-02  
PM Industrial Bldg.  
Singapore 368363

Tel: 65 6287 8998  
Fax: 65 6287 8998

**Pulse North Asia**  
3F, No. 198  
Zhongyuan Rd.  
Zhongli City  
Taoyuan County 320  
Taiwan R. O. C.

Tel: 886 3 4356768  
Fax: 886 3 4356823 (Pulse)  
Fax: 886 3 4356820 (FRE)

Performance warranty of products offered on this data sheet is limited to the parameters specified. Data is subject to change without notice. Other brand and product names mentioned herein may be trademarks or registered trademarks of their respective owners.

© Copyright, 2009. Pulse Engineering, Inc. All rights reserved.